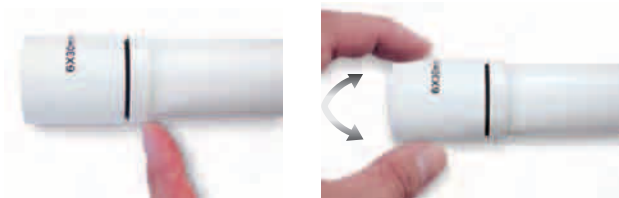


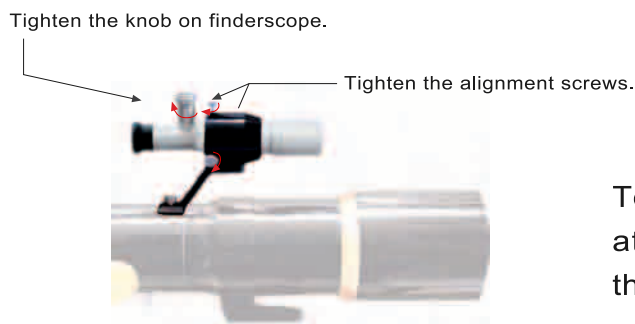
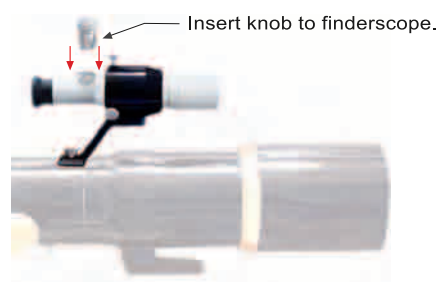
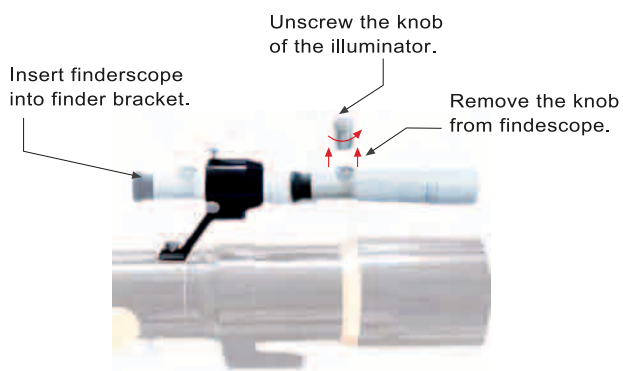


FINDERSCOPE MANUAL

Please read carefully. This information is important to preserve the proper functioning of the product you just purchased.

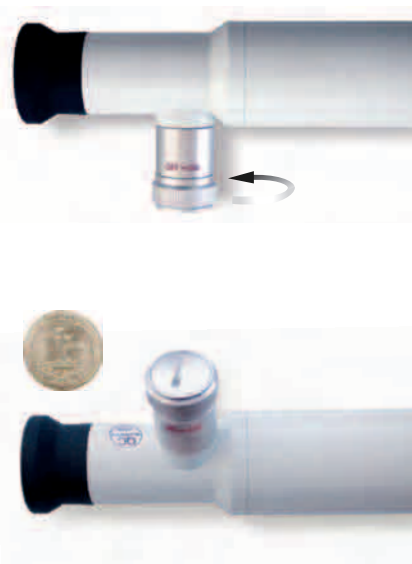
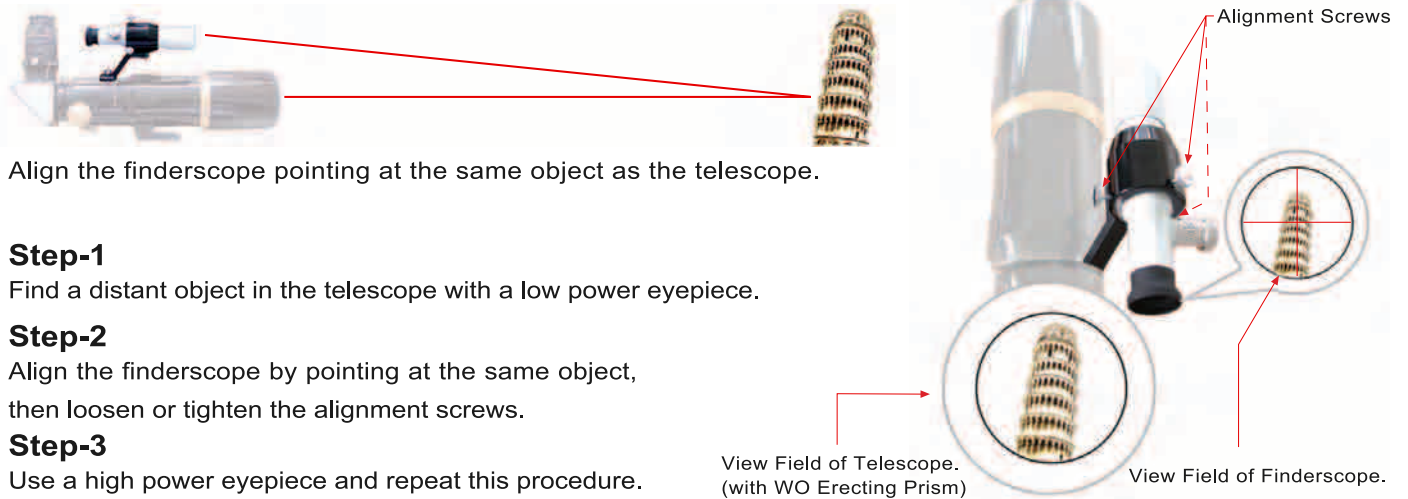


In order to focus your finderscope, loosen and turn the ring at the base of its dewshield, adjust, and when done, tighten back the ring.



To fit into the finder bracket, unscrew the knob at its base and slide in the finderscope from the front of the bracket as shown.

Aligning the finderscope and the telescope is an easy process. Please follow the steps here below.



In order to switch on the illuminated reticule of the finder scope, turn the knob gently in the direction of the ON sign until it clicks (about 1 fifth of a turn).

Do not keep turning after it clicks or apply strong force on the knob, as this might result in damage. To switch off the reticule, turn the knob in the opposite direction until it clicks.

To change the battery, hold the side of knob steady, and using a coin or a screwdriver, rotate slightly the cap of the knob until it opens. We suggest you should take out the battery after every use, especially in cold environments, in order to save the battery and avoid leakage.

Important :

Do not aim this finderscope or any other optical instrument at the sun without proper filtering.

Thank you for purchasing this William Optics finderscope!

Let us know what you think of it : support@william-optics.com